

## BSP™61 - Print and Apply System



# Complete labelling solution to obtain 100% traceability

The BSP™61 Print and Apply System offers a fully automatic labelling solution anywhere along the production line. It combines a thermal transfer label printer with an automatic applicator and is designed to consistently print and accurately position and apply labels in almost all manufacturing applications. The BSP61 combines precision, versatility and high print quality and offers best value for money.

## Increase your productivity

The use of high-performance equipment for labelling in a production environment maximises efficiency by enabling first-time clean, clear and accurate labelling, streamlined traceability, reducing material wastage, maintaining uptime and measuring WIP. The result? A reduction of each unit's total production cost. Tier 1 automotive suppliers have reported up to 70% labour cost savings and an increase in production efficiency and quality.

## Meets the demands of your environment

The BSP™61 Print and Apply System is developed for applications such as PCB marking, component and product marking in high quality demanding industries like automotive, electronics, manufacturing and laboratory. Designed for optimum, easy integration into existing production lines, the BSP61 has a compact footprint and offers a software that is compatible with your host system.

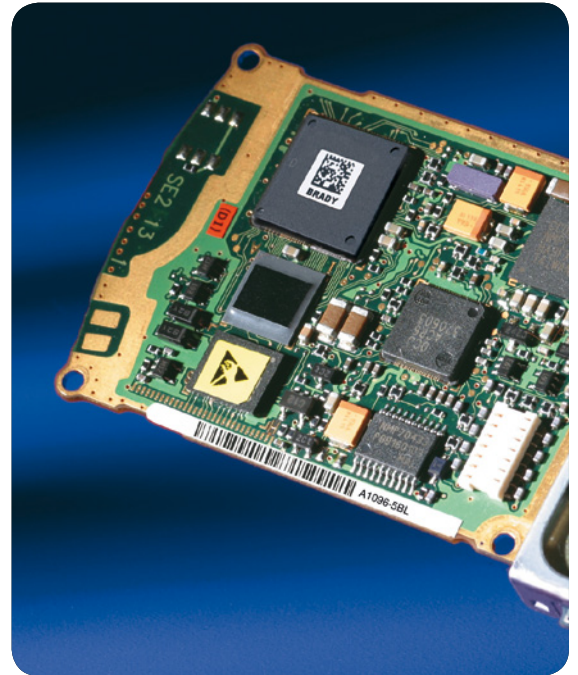


## Your benefits

| Real time processing and tracking   |   |
|---|---|
| Zero queue print and apply  | Follows real time processing and tracking eliminating the potential for error   |
| Printing and labelling at the same time   |   |
| Multi-tasking capability  | Allows printing and labelling at the same time to maximise efficiency in the production process, reducing production time and therefore total unit cost   |
| A specially developed Auto Apply labelling material   |   |
| Brady tailored label materials for Auto Apply   | Best print quality and dispensability. Materials available for every harsh environment, such as, chemical washes, abrasion, temperature and weathering including UV. Specially developed ROHS PCB labelling material. |
| Ensure correct traceability with crisp printing   |   |
| 300 and 600 dpi printing capability   | Maximum flexibility for labelling. With the quality of 600 dpi, small, legible labels are guaranteed. Capable of printing 2D codes (DataMatrix, QR, ...) on the smallest of labels.                                   |
| Label sizes for every application   |   |
| Prints and applies a range of labels sized from 4 mm to 60 mm height, and 4 mm to 115 mm width                      | Label sizing to suit every application. Ideal for labelling small components or surfaces to ensure correct traceability.  |
| Maximum efficiency in production line integration   |   |
| Manual or automatic feeding by adding a foot switch or interfacing to a PLC   | With a choice of how to control the print and apply cycle, it maximises efficiency in production line integration   |
| One system for many applications  |   |
| 3 standard applicators: 1 or 2 axis placement and rotation 90° or 180°  | Brings both efficiency and flexibility. Use the same print & apply machine to label different components on same surface or product i.e. PCB even if components are positioned differently on surface                 |
| Accurate label positioning  |   |
| Very high placement accuracy +/- 0.3 mm   | Best quality labelling, to ensure content is in the right place on the label and also the label is correctly positioned in situ. Ensures 100% accurate traceability   |
| Easy integration into existing production lines   |   |
| Compact size  | A small footprint and overall size allows fast, easy integration into existing production lines and work areas.   |
| Seamless software integration   |   |
| Direct programming with J-Script, printer language is easy to integrate into your host (manufacturing / ERP) system | No data duplication, error and risk reduction, ensure correct traceability  |
| ESD safe working  |   |
| Anti-static brush   | Ensures optimal functionality in ESD production environments  |

# Why Brady labelling solutions?

- Brady runs one of the world's largest R&D programmes on the design and production of industrial-grade labels. Our expertise in the application of specialist inks, adhesives, plastics and other materials used in labels is unrivalled.
- Brady products and services are focused on its industrial customer base. We have a team of qualified engineering consultants who know how to implement a lineside labelling system for maximum efficiency.
- Brady labels are manufactured in facilities with ISO/TS 16949 certification. You can rest assured that your production process will not be hindered by failures in our products.
- Brady supplies via specialised integrators a complete labelling system that includes the means to print and apply labels within your production process and link the printing software into your production software system, quickly and easily.



## Problem free automatic labelling

Brady have developed unique solutions that remove the problems of automating label application to ensure reliable tracking and tracing.

- **No Cutting into the liner** – custom developed Clean Liner Technology (CLT) prevents over cutting into the liner and ensures a perfect result from the outset.
- **Clean pick up** – our applicator head will pick up every label without exception
- **No Adhesive bleeding** – CLT eradicates any problems with the adhesive
- **No Label curling** – our labelling materials are developed specifically for automatic application with a no-curl guarantee
- **Accuracy** – correct placement first time, every time

## High performance identification materials for demanding applications require:

- A label material and material top coat that is carefully matched with an ink to create the most durable print for your application
- An adhesive selected to adhere to the application surface and stay applied for the product's lifetime
- Production expertise to ensure that however the product is applied, it can be dispensed and/or handled efficiently



Whatever your application, our carefully developed material combinations withstand nearly any chemical that is found in use in the industry, often without the need to laminate.

Our label materials are extensively tested in our world-class laboratories for resistance to chemicals, abrasion, temperature on one line and weathering, including UV. In many cases it is possible to test specific material combinations to specifications defined by you.



# Technical details



- |   |  |
|---|--|
| <p><b>1 Large graphic display</b><br/>White backlight guarantees clarity of display.<br/>Depending on the installation position the display can be rotated in 90° steps.</p> <p><b>2 Navigator pad</b><br/>Simple, interactive menu control. Applicable functions are illuminated. Menu handling is easy to comprehend.</p> <p><b>3 Ribbon retainer</b><br/>The three part tightening axles allow a fast and easy ribbon exchange.</p> <p><b>4 Solid, buckling resistant metal chassis</b><br/>Manufactured from die cast aluminium.<br/>All components are fixed to the body.</p> <p><b>5 Assembly applicator</b><br/>The applicator is attached by hinges and can be changed easily.</p> <p><b>6 Printing offset</b><br/>After changing the label roll the printing position is set up automatically after a few printed labels. This label position is then stored, even if the machine is turned off.</p> | <p><b>7 Printhead</b><br/>The printhead can be replaced easily.<br/>Adjustments and set-ups are not necessary.</p> <p><b>8 Ribbon saver</b><br/>It is used for labels which are to be only partially printed.<br/>The printhead is lifted off in the plain area and the ribbon is stopped during label feed.</p> <p><b>9 Transport system</b><br/>The ball bearing transport rollers ensure a highly accurate printing and the precise feeding of labels.</p> <p><b>10 Label unwinder</b><br/>The swing lever and the integrated brake make sure that the labels are unwound with constant tension.</p> <p><b>11 Rewinder</b><br/>The liner of a label roll is rewound after the labels have been peeled off. The clamping shafts enable an easy exchange of the roll.</p> <p><b>12 Print direction</b><br/>All BSP61 label printers with applicators are available in left and right orientation.</p> |
|---|--|

# Interfaces



- 1 RS232C- Interface
- 2 USB 2.0 Slave interface
- 3 Ethernet 10/100 Base T-interface with TCP/IP
- 4 Slot for Wireless LAN-card
- 5 Two USB-Master-interfaces to connect an external operation panel, keyboard, scanner or service key
- 6 Slot for memory card CompactFlash Type I
- 7 Connection for warning light  
Indicates the display and the printer status  
Green Ready for operation  
Yellow Pre-warning: end of label, end of ribbon  
Red Printing or applying error
- 8 Connection main valve for air pressure:  
On / off signal for compressed air supply
- 9 Connection external E-stop  
In connection with a main valve this interface allows to cut off the compressed air supply in case of an emergency

- 10 Digital I/O interface  
25-pin SUB-D socket.  
All 24V in- and outputs are optically isolated

## Inputs

Start printing and applying  
Reprint  
Label feed  
Delete print job  
Pause  
Label dispensed  
Reset  
Stop printing and applying  
Print first label  
Rotation 4200

## Outputs

Ready to operate  
Print data available  
Paper feed on  
Pre-warning end of ribbon  
Pre-warning end of label  
Error end of ribbon  
Error end of label  
Label in dispensing position  
Basic position / upper end position  
Applying position / lower end position  
Common alarm

## Options



Interface Centronics bi-directional acc. IEEE 1284.  
Interface RS422/RS485 1.200 up to 230.400 Baud/8 Bit.  
The interfaces are connected to the PC.  
Connection to the printer via mini USB-connection cable.



Label selection box-I/O-box. Via SPS up to 16 different labels can be loaded from a memory card.  
Operation of four in-/outputs via Basic Interpreter.



WLAN card 802.11 b/g.

# Technical data

| 1. Printhead   |                     | BSP61-62   | BSP61-34     |
|--|---------------------|--|--------------|
| Print method   |                     | Thermal transfer/Direct thermal  |              |
| Print resolution dpi   |                     | 600  | 300          |
| Print speed up to mm/s   |                     | 100  | 250          |
| Print width up to mm   |                     | 57   | 105.60       |
| 2. Material  |                     |  |              |
| Labels on rolls  |                     | Paper, cardboard, textiles, synthetics<br>PET, PE, PP, PVC, PU, acrylate, PI |              |
| Thickness mm / weight g/m²   |                     | 0.055 - 0.35 / 60 - 160  |              |
| Width Labels¹) mm  |                     | 4 - 58   | 10 - 114     |
| Width of liner Spool / Roll  |                     | 10 - 62 / 25 - 62  | - / 25 - 118 |
| Label height¹) when dispensing mm  |                     | 4 - 200  | 8 - 250      |
| Media roll: Total Ø up to mm   |                     | 205 / 305  |              |
| Core Ø mm for BSP61  |                     | 40   | -            |
| Roll / Adapter   |                     | 40 / 50  | 40 / 50      |
| Roll   |                     | 76   | 76           |
| Winding direction  |                     | outside or inside  |              |
| 3. Ribbon  |                     |  |              |
| Ink  |                     | outside or inside  |              |
| Roll diameter up to mm   |                     | 80   | 80           |
| Core diameter mm   |                     | 25   | 25           |
| Ribbon length variable up to m   |                     | 500  | 500          |
| Width²) mm   |                     | 60   | 114          |
| 4. Internal rewinder   |                     |  |              |
| Total diameter up to mm  |                     | 155 / 210  |              |
| Core diameter mm   |                     | 76   | 76           |
| 5. Dimensions of the printer   |                     |  |              |
| Height mm  | Label roll Ø 205 mm | 400  |              |
|  | Label roll Ø 305 mm | 538  |              |
| Depth mm   | Label roll Ø 205 mm | 400  |              |
|  | Label roll Ø 305 mm | 518  |              |
| Width mm   |                     | 200  | 255          |
| Weight kg  |                     | 15   | 16           |
| 6. Label sensor  |                     |  |              |
| See-through sensor   |                     | for leading edge of the label or punching<br>marks and end of material       |              |
| Reflective sensor from the bottom /<br>from the top  |                     | for printing marks   |              |
| Distance from center to shoulder middle wall   |                     | 2 - 26   | 2 - 47       |
| 7. Electronics   |                     |  |              |
| Processor high speed 32 Bit Clock rate<br>MHz  |                     | 266  |              |
| (RAM) MB   |                     | 64   |              |
| Memory IFFS MB Flash   |                     | 8  |              |
| Slot for memory CompactFlash-card Type I   |                     | ■  |              |
| Slot for Wireless LAN-card   |                     | ■  |              |
| Battery buffer for   |                     | Real-time clock, printout of time and<br>date storage of data with shut-down |              |
| Warning signal   |                     | Acoustic signal when error   |              |
| 8. Interfaces  |                     |  |              |
| Centronics bi-directional acc. IEEE 1284   |                     | □  |              |
| RS232 C 1.200 up to 230.400 Baud/8 Bit   |                     | ■  |              |
| USB 2.0 High Speed Slave for<br>PC-connection  |                     | ■  |              |
| Ethernet 10/100 Base T, LPD, RawIP-<br>Printing, ftp-Printing, DHCP, HTTP, FTP,<br>SMTP, SNMP, TIME, Zeroconf, mDNS,<br>SOAP |                     | ■  |              |
| RS422, RS485<br>1.200 up to 230.400 Baud/8 Bit   |                     | □  |              |
| WLAN card 802.11b/g WEP/WPA<br>PSK (TKIP)  |                     | □  |              |
| 2x USB Master for  |                     | external operation panel, keyboard,<br>scanner or service key                |              |
| Connection warning light   |                     | ■  |              |
| Digital I/O-Interface  |                     | ■  |              |
| cab applicator connection  |                     | ■  |              |
| Connection for external emergency stop   |                     | ■  |              |
| Connection compressed air  |                     | ■  |              |
| 9. Operation data  |                     |  |              |
| Power supply   |                     | 100 - 240 V ~ 50/60 Hz, PFC  |              |
| Power consumption  |                     | max. 300 W   |              |
| Temperature / Humidity:  | Operation           | + 5 - 40°C / 10 - 85% not condensing   |              |
|  | Storage             | + 0 - 60°C / 20 - 85% not condensing   |              |
|  | Transport           | -25 - 60°C / 20 - 85% not condensing   |              |
| Approvals  |                     | CE, FCC class A<br>CB*, CCC*, UL*  |              |

\*pending



■ Standard □ Option

| 10. Operation panel               |   |   |
|-----------------------------------|---|---|
| Buttons / LED-display:            | Pause, Feed, Cancel, Menu, Enter, 4 x Cursor  |   |
| LCD-graphic display:              | Width 60, Height 40 mm<br>Text 4 lines, 20 characters per line  |   |
| 11. Settings                      |   |   |
|                                   | Digital or analogue clock<br>System settings<br>Print parameters<br>25 language settings  | time<br>date<br>interfaces<br>security  |
| 12. Monitoring                    |   |   |
| Warning if:                       | End of ribbon<br>End of labels  | ■<br>■  |
| Stop printing if:                 | End of ribbon<br>End of labels<br>Printhead open  | ■<br>■<br>■   |
| On the display                    | Data reception<br>WLAN field intensity<br>Ethernet state<br>Used memory<br>Temperature printhead<br>Access to memory card   | Clock<br>Date sheet<br>abc debug<br>Input buffer<br>Remaining quantity of ribbon  |
| 13. Test routines                 |   |   |
| System diagnosis                  | When switched on with testing of printhead  |   |
| Short Status, Status print        | Font list, device list, WLAN state, profile of label, test grid, monitor mode, PPP state  |   |
| Status reports                    | Extensive status print with information about setting, e.g. print length counter, runtime counter etc.<br>Request of machine state via software command. Detailed status messages on the display, e.g. network error-no link, barcode error etc..   |   |
| 14. Fonts                         |   |   |
| Font types                        | 5 Bitmap fonts incl. OCR-A, OCR-B and 3 Vector fonts Swiss 721, Swiss 721 Bold and Monospace 821 available internally, loadable TrueType fonts.<br>Optional Chinese (simplified Chinese), Optional Thai   |   |
| Character sets                    | Windows 1250 up to 1257, DOS 437, 737, 775, 850, 852, 857, 862, 864, 866, 869, EBC DIC 500, ISO 8859-1 up to -10 and -13 up to -16, WinOEM 720, UTF-8, Macintosh Roman, DEC MCS, KOI8-R.<br>All West and East European latin, cyrillic, greek, hebrew and arabic characters are supported. Optional Thai and Chinese. |   |
| Bitmap fonts                      | Size of width and height 1 - 3 mm<br>Zoom 2-10<br>Orientation 0°, 90°, 180°, 270°   |   |
| Vector- / TrueType fonts          | Size of width and height 0.9 - 128 mm<br>variable zoom,<br>Orientation 360° in steps of 1°  |   |
| Font formats                      | Bold, italic, underlined, outline, negative, grey, vertical, depending on character fonts   |   |
| Font width                        | Variable  |   |
| 15. Graphics                      |   |   |
| Graphic elements                  | Line, arrow, box, circle, ellipse, filled and filled with fading  |   |
| Graphic formats                   | PCX, IMG, BMP, TIF, MAC, GIF, PNG   |   |
| 16. Barcodes                      |   |   |
| Linear barcodes                   | Code 39, Code 93<br>Code 39 Full ASCII<br>Code 128 A, B, C<br>Codabar<br>EAN 8, 13<br>EAN / UCC 128<br>EAN / UPC Appendix 2<br>EAN / UPC Appendix 5<br>FIM<br>HIBC  | Interleaved 2 / 5<br>Ident- and lead code of Deutsche Post AG<br>JAN 8, 13<br>MSI<br>Plessey<br>Postnet<br>RSS 14<br>UPC A, E, E0 |
| 2D-Codes                          | Aztec, Codablock F, Data Matrix, PDF 417, Micro PDF 417, UPS Maxicode, QR-Code, RSS 14 truncated, limited, stacked and stacked omnidirectional, EAN-Datamatrix, GS1 Data Bar  |   |
|                                   | All codes variable in height, module width and ratio. Orientation 0°, 90°, 180°, 270°. Optionally with check digit, printed characters and Start/Stop code, depending on code type.   |   |
| 17. Software                      |   |   |
| Programming                       | J-Script direct programming<br>abc-Basic Compiler<br>Database Connector   | ■<br>■<br>□   |
| System diagnosis / administration | Printer monitoring<br>Network Manager   | ■<br>□  |
| Accredited for Windows driver     | 32 / 64 bit for Windows XP<br>Windows Vista<br>Windows 7  | Server 2003<br>Server 2008<br>Server 2008 R2<br>■   |
| Stand-alone operation             |   |   |

<sup>1)</sup> The label size is additionally defined through the type of the applicator. Depending on label size, material and adhesive limitations are possible. Critical material or applications have to be tested and cleared.



<sup>2)</sup> For best print performance the width of the ribbon should be approximately the same width as the labels.

# Ordering Options

|   | Order Reference | Description  |
|---|-----------------|--|
|  | BSP61-62L       | BSP61 for up to 50 mm wide consumables - 600 dpi - to be combined with left applicator   |
|   | BSP61-34L       | BSP61 for up to 101 mm wide consumables - 300 dpi - to be combined with left applicator  |
|  | BSP61-62R       | BSP61 for up to 50 mm wide consumables - 600 dpi - to be combined with right applicator  |
|   | BSP61-34R       | BSP61 for up to 101 mm wide consumables - 300 dpi - to be combined with right applicator |

## Product Supplied

Label printer, Power cable Type E+F, length 1.8 m, Connecting cables USB, length 1.8 m, Operation manual in English and German

|  | Order Reference   | Description   |
|--|-------------------|---|
|   | Applic. 4114L-200 | Left applicator - cylinder stroke 200 mm - horizontal precision guide in feed direction   |
|  | Applic. 4114L-300 | Left applicator - cylinder stroke 300 mm - horizontal precision guide in feed direction   |
|  | Applic. 4214L-200 | Left applicator - cylinder stroke 200 mm - horizontal rotary cylinder (angle of rotation 90 other 180°)                             |
|  | Applic. 4214L-300 | Left applicator - cylinder stroke 300 mm - horizontal rotary cylinder (angle of rotation 90 other 180°)                             |
|  | Applic. 4414L-200 | Left applicator - cylinder stroke 200 mm - adjustable horizontal precision guides in X and Y direction (up to Y = 13 mm, X = 5 mm)  |
|  | Applic. 4414L-300 | Left applicator - cylinder stroke 300 mm - adjustable horizontal precision guides in X and Y direction (up to Y = 13 mm, X = 5 mm)  |
|  | Applic. 4114R-200 | Right applicator - cylinder stroke 200 mm - horizontal precision guide in feed direction  |
|  | Applic. 4114R-300 | Right applicator - cylinder stroke 300 mm - horizontal precision guide in feed direction  |
|  | Applic. 4214R-200 | Right applicator - cylinder stroke 200 mm - horizontal rotary cylinder (angle of rotation 90 other 180°)                            |
|  | Applic. 4214R-300 | Right applicator - cylinder stroke 300 mm - horizontal rotary cylinder (angle of rotation 90 other 180°)                            |
|  | Applic. 4414R-200 | Right applicator - cylinder stroke 200 mm - adjustable horizontal precision guides in X and Y direction (up to Y = 13 mm, X = 5 mm) |
|  | Applic. 4414R-300 | Right applicator - cylinder stroke 300 mm - adjustable horizontal precision guides in X and Y direction (up to Y = 13 mm, X = 5 mm) |



### Cover

Protection against dirt and accidental contact.



### Sub-D plug

Connection of the control signals to the IO-interface with screw clamps.



### External operation panel

If the operation panel is not accessible after installation of the printer into a production plant it is possible to attach an external operation panel.



### Warning light

Indicates the display and the printer status.

**Red:** Printing or applying failure

**Yellow:** Pre-warning: end of label, end of ribbon

**Green:** Ready for operation



### Compact keyboard

Connection: USB, number of keys: 86.  
L x W: 282 x 132 mm, Cherry G84-4100.



### Air pressure regulation unit

The unit can be assembled to the BSP61 or its brackets.  
Pre-adjustment to 4.5 bar by using a mounting angle.



### Product sensor

For automatic printing and applying after detection of a product, e.g. on a conveyor belt.



### Air pressure regulation unit with additional cut-in valve

In case of integration of the print & apply system into a production line the air-pressure can be turned on or off externally. Pre-adjustment to 4.5 bar.

# BRADY EMEA

## BRADY Africa

PO BOX 18015  
Jebel Ali, Dubai, UAE  
Phone +971 4 881 2524  
Fax +971 4 881 3183

## BRADY Benelux

Industriepark C/3  
Lindestraat 20  
9240 Zele, Belgium  
Phone +32 (0) 52 45 78 11  
Fax +32 (0) 52 45 78 12

## Brady Central & Eastern Europe

Na Pátoch 18  
831 06 Bratislava, Slovakia  
Phone +421 2 3300 4800  
Fax +421 2 3300 4801

## BRADY Denmark

Svendborgvej 39D  
5260 Odense S  
Phone +45 66 14 44 00  
Fax +45 66 14 44 50

## BRADY France

Parc EURO CIT  
45, avenue de l'Europe  
59436 Roncq Cedex  
Phone +33 (0) 3 20 76 94 48  
Fax +33 (0) 3 20 76 76 06

## BRADY Germany

Büchenhöfe 2  
63329 Egelsbach  
Phone +49 (0) 6103 7598 660  
Fax +49 (0) 6103 7598 670

## BRADY Hungary

Puskás Tivadar u. 4.  
2040 Budaörs  
Phone +36 23 500 275  
Fax +36 23 500 276

## BRADY Italy

Via Pitagora 18  
20128 Milano  
Phone +39 02 26 00 00 22  
Fax +39 02 25 75 351

## BRADY Middle East FZE

PO BOX 18015  
Jebel Ali, Dubai, UAE  
Phone +971 4881 2524  
Fax +971 4881 3183

## BRADY Norway

Lerstadveien 506  
6018 Ålesund  
Phone +47 70 13 40 00  
Fax +47 70 13 40 01

## BRADY Spain & Portugal

Calle Aragón 271  
08007 Barcelona, Spain  
Phone +34 900 902 993  
Fax +34 900 902 994

## BRADY Sweden

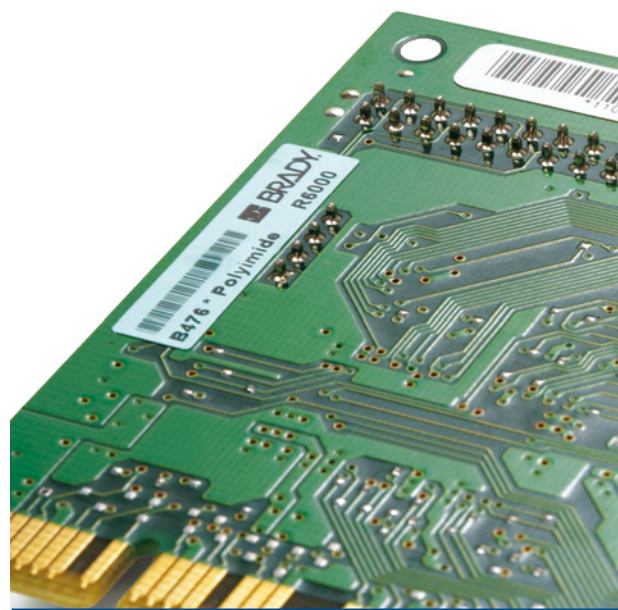
Vallgatan 5  
170 67 Solna  
Phone +46 (0) 8 590 057 30  
Fax +46 (0) 8 590 818 68

## BRADY Turkey

Selvili Sok. No: 3/4  
4. Levent Istanbul 34330  
Phone +90 212 264 02 20 / 264 02 21  
Fax +90 212 270 83 19

## BRADY UK & Ireland

Wildmere Industrial Estate  
Banbury, Oxon – OX16 3JU, UK  
Phone +44 (0) 1295 228 288  
Fax +44 (0) 1295 228 100



## BRADY WORLDWIDE

|                  |                 |
|------------------|-----------------|
| Australia        | 612-8717-6300   |
| Brazil           | 55-11-3686-4720 |
| Canada           | 1-800-263-6179  |
| China (Beijing)  | 86-10-6788-7799 |
| China (Shanghai) | 86-21-6886-3666 |
| China (Wuxi)     | 86-510-528-2222 |
| Hong Kong        | 852-2359-3149   |
| Japan            | 81-45-461-3600  |
| Korea            | 82-31-451-6600  |
| Latin America    | 1-414-540-5560  |
| Malaysia         | 60-4-646-2700   |
| Mexico           | 525-399-6963    |
| New Zealand      | 61-2-8717-2200  |
| Philippines      | 63-2-658-2077   |
| Singapore        | 65-6477-7261    |
| Taiwan           | 886-3-327-7788  |
| Thailand         | 66-2-793-9200   |
| USA              | 1-800-537-8791  |

Your distributor

EUR-0-521-EN



Y2270313

  
WHEN PERFORMANCE MATTERS MOST™

© 2012 Brady Worldwide, Inc. All Rights Reserved.